



## **GBC35-700 HP: 400-700 Disp: 2.0L - 5.0L**

Garrett Boost | Club Line turbochargers are high performance journal bearing products in a cost effective price range. GBC combines modern, high flowing aerodynamics with a robust journal bearing rotating group to make a powerful and affordable turbocharger.

**Garrett**  
ADVANCING MOTION

Performance results of this product are highly dependent upon your vehicle's modifications and tuning/calibration. The target power represented above has been calculated based strictly on choke flow of the compressor map (total turbo capability), which represents the potential flywheel power.

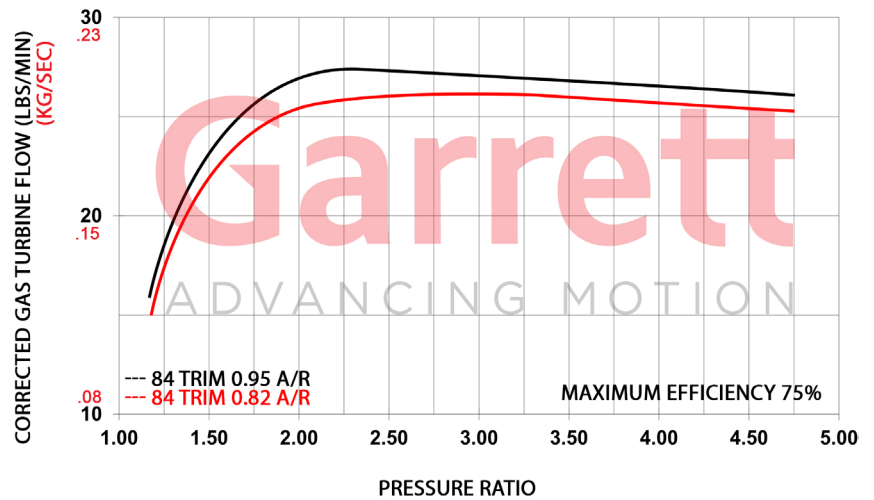
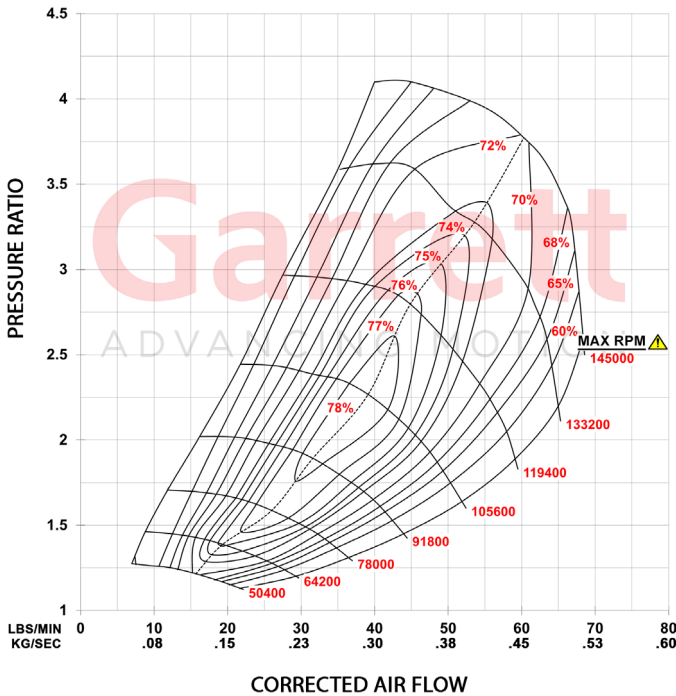
# GBC35-700 HP: 400-700 Disp: 2.0L - 5.0L



### Features:

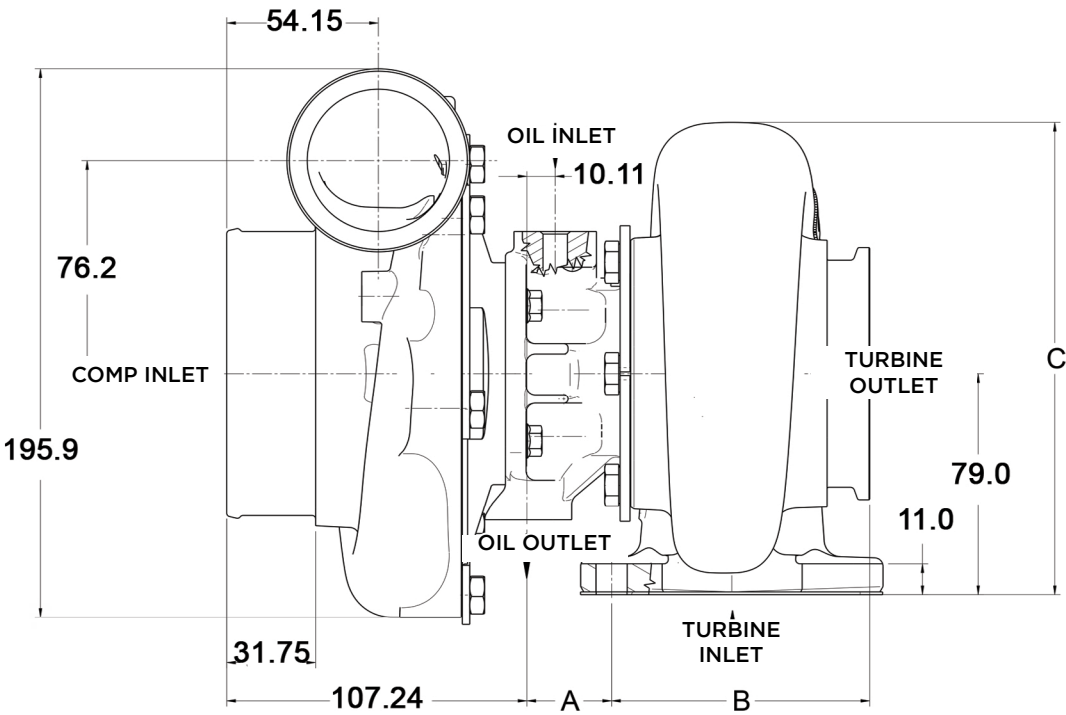
- Billet compressor wheel with extended tip design for higher pressure ratios
- 58mm compressor wheel with GTX Gen II compressor aerodynamics
- Journal bearing rotating group with 360-degree thrust bearing
- Outline interchangeable with GBC37-900 for stage upgrades
- Machined boost signal port with installed plug
- Modern turbine wheel aerodynamics
- Oil-cooled center housing

GBC35-700		Compressor				Turbine		
		Inducer	Exducer	Trim	A/R	Inducer	Exducer	Trim
HP: 400-700	Disp: 2.0L-5.0L	58mm	76mm	58	0.72	68mm	62mm	84
Supercore		PN						
		913840-5001S						
Turbine Kits: GBC35		PN		A/R	Inlet	Outlet	Wastegate	Divided
Interchangeable with GBC35		740902-0123		0.82	T3	V-Band	Free Float	N
Supercores		740902-0124		0.82	T4	V-Band	Free Float	N
		740902-0125		0.95	T4	V-Band	Free Float	Y

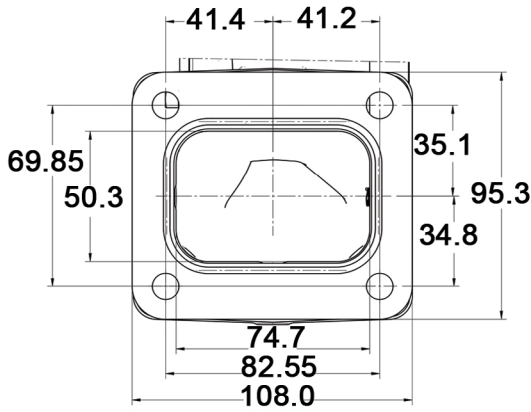
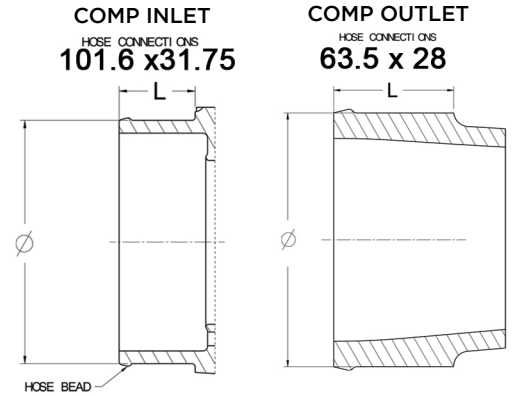


Performance results of this product are highly dependent upon your vehicle's modifications and tuning/calibration. The target power represented above has been calculated based strictly on choke flow of the compressor map (total turbo capability), which represents the potential flywheel power.

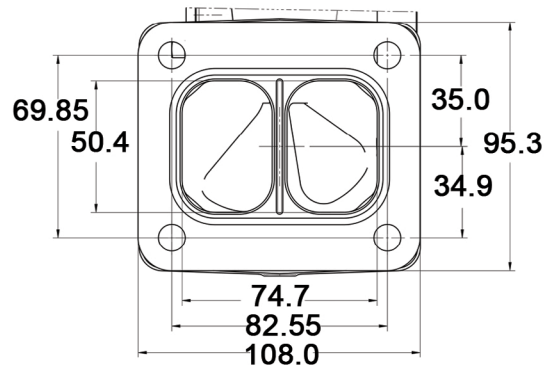
# GBC35-700 HP: 400-700 Disp: 2.0L - 5.0L



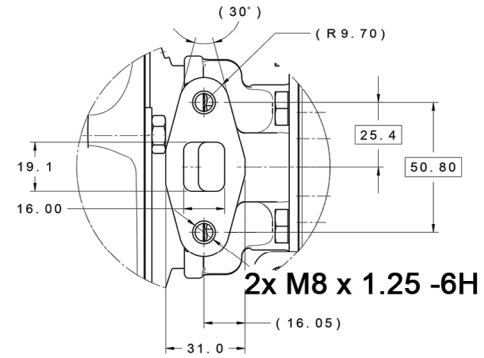
SIZE	TURBINE			
	-	T3 OP	T4 OP	T4 DIV
GBC-35/37	A/R	0.82	0.82	0.95
	A	30.29	27.84	27.84
	B	92.21	93.90	93.90
	C	168.8	179.1	181.2



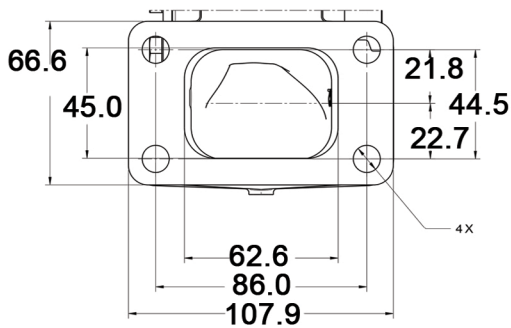
TURBINE INLET T4 OPEN



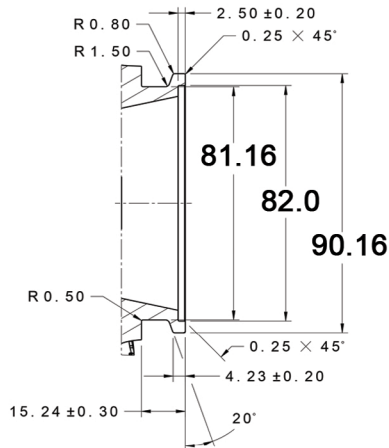
TURBINE INLET T4 DIVIDED



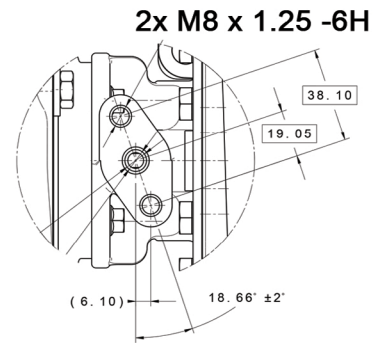
OIL OUTLET



TURBINE INLET T3 OPEN



TURBINE OUTLET



OIL INLET